

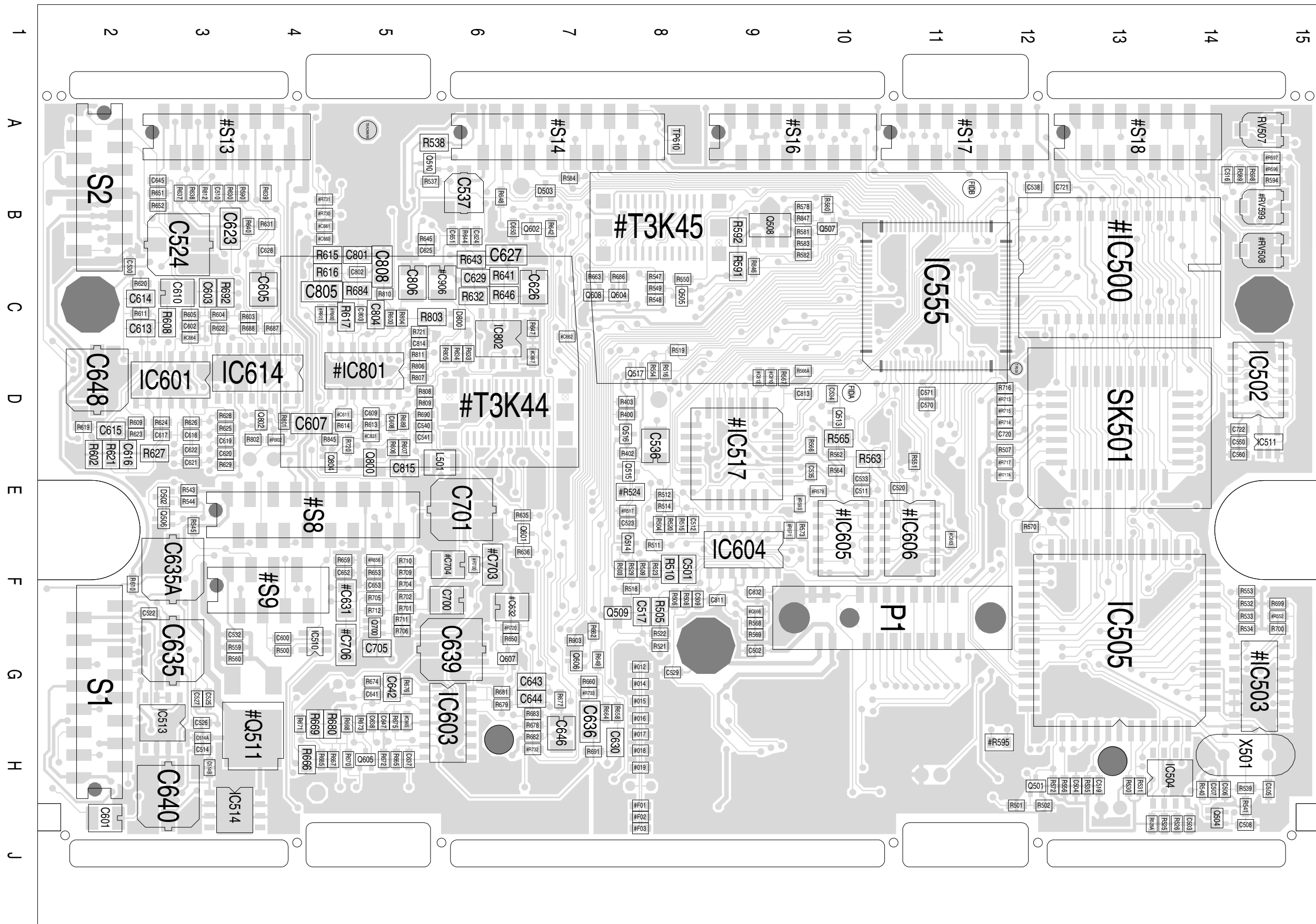
Ref	IPN	Description	Ref	IPN	Description	Ref	IPN	Description
#015	038-14470-00	RES 0603 4K7 1/16W +-5%	C646	014-07470-01	CAP 4U7 'B'CASE 25V +-10% 267	R400	038-15100-00	RES 0603 10K 1/16W +-5%
#S9	240-10000-05	CONN SMD SKT 8W 2R M-MATCH	C647	018-16100-01	CAP 0603 100N +80-20% Y5V 16V	R402	038-15270-00	RES 0603 27K 1/16W +-5%
#S13	240-10000-06	CONN SMD SKT 12W 2R M-MATCH	C648	016-08470-01	CAP EL SMD 6*4 47UF 16V	R403	038-15270-00	RES 0603 27K 1/16W +-5%
#S14	240-10000-07	CONN SMD SKT 16W 2R M-MATCH	C650	018-13150-00	CAP 0603 CHIP 150P 50VNPO +-5%	R500	038-13470-00	RES 0603 470E 1/16W +-5%
#S16	240-10000-06	CONN SMD SKT 12W 2R M-MATCH	C651	018-13150-00	CAP 0603 CHIP 150P 50VNPO +-5%	R501	038-15470-10	RES 0603 CHIP 47K 1/16W+-1%
#S17	240-10000-06	CONN SMD SKT 12W 2R M-MATCH	C652	018-14100-00	CAP 0603 1N 50V X7R +-10%	R502	038-15470-10	RES 0603 CHIP 47K 1/16W+-1%
#S18	240-10000-06	CONN SMD SKT 12W 2R M-MATCH	C653	018-14100-00	CAP 0603 1N 50V X7R +-10%	R503	038-15470-10	RES 0603 CHIP 47K 1/16W+-1%
#T3K44	240-10000-01	CONN SMD 24W (PLUG)	#C661	018-16100-01	CAP 0603 100N +80-20% Y5V 16V	R504	038-14470-00	RES 0603 4K7 1/16W +-5%
#T3K45	240-10000-01	CONN SMD 24W (PLUG)	#C662	018-16100-01	CAP 0603 100N +80-20% Y5V 16V	R505	036-16150-00	RES M/F 0805 150K 5%
C501	015-23680-08	CAP CER 0805 680P 10% X7R 50V	#C663	018-16100-01	CAP 0603 100N +80-20% Y5V 16V	R506	038-15100-00	RES 0603 10K 1/16W +-5%
C502	018-16100-01	CAP 0603 100N +80-20% Y5V 16V	#C664	018-16100-01	CAP 0603 100N +80-20% Y5V 16V	R507	038-10000-00	RES 0603 ZERO OHM 1/16W +-5%
C503	018-16100-01	CAP 0603 100N +80-20% Y5V 16V	#C665	018-16100-01	CAP 0603 100N +80-20% Y5V 16V	R508	038-16100-00	RES 0603 100K 1/16W +-5%
C504	018-16100-01	CAP 0603 100N +80-20% Y5V 16V	#C666	018-16100-01	CAP 0603 100N +80-20% Y5V 16V	R509	038-14220-00	RES 0603 2K2 1/16W +-5%
C505	018-12390-10	CAP 0603 CHIP 39P 50V NPO +-1%	C700	014-07470-01	CAP 4U7 'B'CASE 25V +-10% 267	R510	036-18100-00	RES M/F 0805 10M 5%
C506	018-12220-10	CAP 0603 CHIP 22P 50V NPO +-0.1	C701	016-08470-01	CAP EL SMD 6*4 47UF 16V	R511	038-16470-00	RES 0603 470K 1/16W +-5%
C507	018-12270-10	CAP 0603 CHIP 27P 50V NPO +-1%	#C704	014-07470-01	CAP 4U7 'B'CASE 25V +-10% 267	R512	038-16100-00	RES 0603 100K 1/16W +-5%
C508	018-16100-01	CAP 0603 100N +80-20% Y5V 16V	C705	015-24470-08	CAP CER 0805 4N7 10% X7R 50V	R514	038-16100-00	RES 0603 100K 1/16W +-5%
C509	018-14100-00	CAP 0603 1N 50V X7R +-10%	C720	018-16100-01	CAP 0603 100N +80-20% Y5V 16V	R515	038-16100-00	RES 0603 100K 1/16W +-5%
C510	018-15100-00	CAP 0603 10N 50V X7R +-10%	C721	018-16100-01	CAP 0603 100N +80-20% Y5V 16V	R516	038-16100-00	RES 0603 100K 1/16W +-5%
C511	018-15100-00	CAP 0603 10N 50V X7R +-10%	C722	018-16100-01	CAP 0603 100N +80-20% Y5V 16V	#R517	038-16220-00	RES 0603 220K 1/16W +-5%
C512	018-14100-00	CAP 0603 1N 50V X7R +-10%	C801	015-25220-08	CAP CER 0805 22N 10% X7R 50V	R518	038-14100-00	RES 0603 1K0 1/16W +-5%
C514	018-16100-01	CAP 0603 100N +80-20% Y5V 16V	C802	018-15100-00	CAP 0603 10N 50V X7R +-10%	R519	038-16100-00	RES 0603 100K 1/16W +-5%
C516	018-16100-01	CAP 0603 100N +80-20% Y5V 16V	C803	018-11470-10	CAP 0603 CHIP 4P7 50VNPO+-0.1P	R520	038-14220-00	RES 0603 2K2 1/16W +-5%
C517	015-23680-08	CAP CER 0805 680P 10% X7R 50V	C804	015-23180-01	CAP CER 0805 180P 5% NPO 50V	R521	038-15100-00	RES 0603 10K 1/16W +-5%
C519	018-16100-01	CAP 0603 100N +80-20% Y5V 16V	C805	015-06100-08	CAP CER 1206 100N 10% X7R 50V	R522	038-14470-00	RES 0603 4K7 1/16W +-5%
C520	018-16100-01	CAP 0603 100N +80-20% Y5V 16V	C806	014-07470-01	CAP 4U7 'B'CASE 25V +-10% 267	R523	038-14100-00	RES 0603 1K0 1/16W +-5%
C522	018-16100-01	CAP 0603 100N +80-20% Y5V 16V	C808	015-06100-08	CAP CER 1206 100N 10% X7R 50V	#R524	036-16330-00	RES M/F 0805 330K 5%
C523	018-16100-01	CAP 0603 100N +80-20% Y5V 16V	C811	018-16100-01	CAP 0603 100N +80-20% Y5V 16V	R525	038-13330-00	RES 0603 330E 1/16W +-5%
C524	016-08470-01	CAP EL SMD 6*4 47UF 16V	C813	018-11560-10	CAP0603 CHIP 5P6 50V NPO+-0.1P	R526	038-14470-00	RES 0603 4K7 1/16W +-5%
C525	018-13150-00	CAP 0603 CHIP 150P 50VNPO +-5%	C814	018-16100-01	CAP 0603 100N +80-20% Y5V 16V	R529	038-10000-00	RES 0603 ZERO OHM 1/16W +-5%
C526	018-13150-00	CAP 0603 CHIP 150P 50VNPO +-5%	C815	015-25150-08	CAP CER 0805 15N 10% X7R 50V	R530	038-15470-10	RES 0603 CHIP 47K 1/16W+-1%
C527	018-13150-00	CAP 0603 CHIP 150P 50VNPO +-5%	C832	018-14100-00	CAP 0603 1N 50V X7R +-10%	R531	038-14470-00	RES 0603 4K7 1/16W +-5%
C529	018-13150-00	CAP 0603 CHIP 150P 50VNPO +-5%	C514A	018-14100-00	CAP 0603 1N 50V X7R +-10%	R532	038-15470-10	RES 0603 CHIP 47K 1/16W+-1%
C530	018-13150-00	CAP 0603 CHIP 150P 50VNPO +-5%	C514B	018-14100-00	CAP 0603 1N 50V X7R +-10%	R533	038-15470-10	RES 0603 CHIP 47K 1/16W+-1%
C532	018-14100-00	CAP 0603 1N 50V X7R +-10%	C635A	016-08470-01	CAP EL SMD 6*4 47UF 16V	R534	038-14470-00	RES 0603 4K7 1/16W +-5%
C533	018-16100-01	CAP 0603 100N +80-20% Y5V 16V	D502	001-10099-01	D BAV99W DUAL SML SIG SOT323	R535	038-14100-00	RES 0603 1K0 1/16W +-5%
C534	018-16100-01	CAP 0603 100N +80-20% Y5V 16V	D503	001-10099-01	D BAV99W DUAL SML SIG SOT323	R537	038-15470-10	RES 0603 CHIP 47K 1/16W+-1%
C535	018-16100-01	CAP 0603 100N +80-20% Y5V 16V	D800	001-10099-01	D BAV99W DUAL SML SIG SOT323	R538	036-15220-00	RES M/F 0805 22K 5%
C536	014-07470-01	CAP 4U7 'B'CASE 25V +-10% 267	#IC500	002-10485-80	IC M48258Y 8K*8 SNAPHAT RAM	R539	038-17100-00	RES 0603 1M 1/16W +-5%
C537	016-07470-01	CAP ELE 6X4MM CHIP 4M7 20%16V	IC501	002-20390-10	IC FLASH SST/ST 128*8K 32PLC	R540	038-14470-00	RES 0603 4K7 1/16W +-5%
C538	018-16100-01	CAP 0603 100N +80-20% Y5V 16V	IC502	002-74900-00	IC SMD 74HC00 4X 2 I/P NAND	R541	038-16100-00	RES 0603 100K 1/16W +-5%
C540	018-13150-00	CAP 0603 CHIP 150P 50VNPO +-5%	IC504	002-10340-64	IC SMD MC34064 L-VOLT SENSE	R543	038-14220-00	RES 0603 2K2 1/16W +-5%
C541	018-13150-00	CAP 0603 CHIP 150P 50VNPO +-5%	IC505	002-16811-11	IC SMD MC68HC11A1CFN3 MCU PLCC	R544	038-15470-10	RES 0603 CHIP 47K 1/16W+-1%
C550	018-16100-01	CAP 0603 100N +80-20% Y5V 16V	IC510	002-74900-40	IC SMD TC7S04F INV SO-5	R545	038-15470-10	RES 0603 CHIP 47K 1/16W+-1%
C560	018-16100-01	CAP 0603 100N +80-20% Y5V 16V	IC511	002-74900-40	IC SMD TC7S04F INV SO-5	R547	038-16100-00	RES 0603 100K 1/16W +-5%
C570	018-16100-01	CAP 0603 100N +80-20% Y5V 16V	IC513	002-10078-05	IC SMD 78L05 5V REG	R548	038-15100-00	RES 0603 10K 1/16W +-5%
C571	018-16100-01	CAP 0603 100N +80-20% Y5V 16V	IC514	002-10078-08	IC SMD 78L08 8V REG SO8	R549	038-14100-00	RES 0603 1K0 1/16W +-5%
C600	018-14100-00	CAP 0603 1N 50V X7R +-10%	IC555	002-16562-60	IC CMOS6X GATE ARRAY	R550	038-16100-00	RES 0603 100K 1/16W +-5%
C601	014-06470-00	CAP TANT CHIP 470N 25V +-20%	IC601	002-10003-24	IC SMD 324 4X O-AMP SO14	R551	038-15100-00	RES 0603 10K 1/16W +-5%
C602	018-12820-10	CAP 0603 CHIP 82P 50V NPO +-1%	IC603	002-10003-24	IC SMD 324 4X O-AMP SO14	#R552	038-10000-00	RES 0603 ZERO OHM 1/16W +-5%
C603	015-23220-01	CAP CER 0805 220P 5% NPO 50V	IC604	002-10003-24	IC SMD 324 4X O-AMP SO14	R553	038-15470-10	RES 0603 CHIP 47K 1/16W+-1%
C605	014-07470-01	CAP 4U7 'B'CASE 25V +-10% 267	#IC606	002-74901-32	IC SMD 74HC132 4X SCHT SO14	R554	038-16100-00	RES 0603 100K 1/16W +-5%
C607	015-06100-08	CAP CER 1206 100N 10% X7R 50V	IC614	002-10040-53	IC 4053B SMD BREAK B4 MAKE	R556	038-15100-00	RES 0603 10K 1/16W +-5%
C608	018-15100-00	CAP 0603 10N 50V X7R +-10%	#IC801	002-10003-24	IC SMD 324 4X O-AMP SO14	R562	038-15100-00	RES 0603 10K 1/16W +-5%
C609	018-12470-10	CAP 0603 CHIP 47P 50V NPO+-0.1	IC802	002-10003-58	IC SMD LM358 DUAL O-AMP	R563	036-14390-00	RES M/F 0805 3K9 5%
C610	014-07470-01	CAP 4U7 'B'CASE 25V +-10% 267	L501	056-10330-02	IND SMD 330NH SIMID02	R564	038-14100-00	RES 0603 1K0 1/16W +-5%
#C611	018-13100-10	CAP 0603 CHIP 100P 50V NPO+-1%	MPT3-1	290-00010-41	CELL M4228 SNAPHAT BAT/PACK	R565	036-14270-00	RES M/F 0805 2K7 5%
C613	015-24470-08	CAP CER 0805 4N7 10% X7R 50V	Q501	000-10084-71	XSTR BC847BW NPN SOT323	R566	038-16100-00	RES 0603 100K 1/16W +-5%
C614	015-25150-08	CAP CER 0805 15N 10% X7R 50V	Q504	000-10084-71	XSTR BC847BW NPN SOT323	R567	038-16100-00	RES 0603 100K 1/16W +-5%
C615	015-25150-08	CAP CER 0805 15N 10% X7R 50V	Q505	000-10084-71	XSTR BC847BW NPN SOT323	R568	038-16100-00	RES 0603 100K 1/16W +-5%
C616	015-25150-08	CAP CER 0805 15N 10% X7R 50V	Q506	000-10084-71	XSTR BC847BW NPN SOT323	R569	038-16100-00	RES 0603 100K 1/16W +-5%
C617	018-15100-00	CAP 0603 10N 50V X7R +-10%	Q507	000-10084-71	XSTR BC847BW NPN SOT323	R570	038-14470-00	RES 0603 4K7 1/16W +-5%
C618	018-15100-00	CAP 0603 10N 50V X7R +-10%	Q508	000-10008-69	XSTR SMD BC869 PNP 1W SOT89	#R571	038-10000-00	RES 0603 ZERO OHM 1/16W +-5%
C619	018-15100-00	CAP 0603 10N 50V X7R +-10%	Q509	000-10003-12	XSTR SMD BFR31 N JFET SOT23	R572	038-15100-00	RES 0603 10K 1/16W +-5%
C620	018-15100-00	CAP 0603 10N 50V X7R +-10%	Q510	000-10084-71	XSTR BC847BW NPN SOT323	R573	038-16100-00	RES 0603 100K 1/16W +-5%
C621	018-15100-00	CAP 0603 10N 50V X7R +-10%	Q513	000-10084-71	XSTR BC847BW NPN SOT323	R578	038-15470-10	RES 0603 CHIP 47K 1/16W+-1%
C622	018-15100-00	CAP 0603 10N 50V X7R +-10%	Q514	000-10085-71	XSTR SMD BC857BW PNP SOT323	R580	038-14220-00	RES 0603 2K2 1/16W +-5%
C623	015-06100-08	CAP CER 1206 100N 10% X7R 50V	Q515	000-10085-71	XSTR SMD BC857BW PNP SOT323	R581	038-14220-00	RES 0603 2K2 1/16W +-5%
C624	018-15100-00	CAP 0603 10N 50V X7R +-10%	Q516	000-10085-71	XSTR SMD BC857BW PNP SOT323	R582	038-13470-00	RES 0603 470E 1/16W +-5%
C625	018-15100-00	CAP 0603 10N 50V X7R +-10%	Q517	000-10084-71	XSTR BC847BW NPN SOT323	R583	038-13470-00	RES 0603 470E 1/16W +-5%
C626	014-07470-01	CAP 4U7 'B'CASE 25V +-10% 267	Q601	000-10084-71	XSTR BC847BW NPN SOT323	R584	038-15470-10	RES 0603 CHIP 47K 1/16W+-1%
C627	015-06100-08	CAP CER 1206 100N 10% X7R 50V	Q602	000-10084-71	XSTR BC847BW NPN SOT323	R589	038-16100-00	RES 0603 100K 1/16W +-5%
C628	018-15100-00	CAP 0603 10N 50V X7R +-10%	Q604	000-10084-71	XSTR BC847BW NPN SOT323	R590	038-16470-00	RES 0603 470K 1/16W +-5%
C629	015-23220-01	CAP CER 0805 220P 5% NPO 50V	Q605	000-10085-71	XSTR SMD BC857BW PNP SOT323	R591	036-13680-00	RES M/F 0805 680E 5%

Ref	IPN	Description	Ref	IPN	Description
R606	038-16470-00	RES 0603 470K 1/16W +-5%	R709	038-14100-00	RES 0603 1K0 1/16W +-5%
R607	038-16100-00	RES 0603 100K 1/16W +-5%	R710	038-13220-00	RES 0603 220E 1/16W +-5%
R608	036-15220-00	RES M/F 0805 22K 5%	R711	038-14220-00	RES 0603 2K2 1/16W +-5%
R609	038-16220-00	RES 0603 220K 1/16W +-5%	R712	038-15100-00	RES 0603 10K 1/16W +-5%
R610	038-10000-00	RES 0603 ZERO OHM 1/16W +-5%	#R715	038-10000-00	RES 0603 ZERO OHM 1/16W +-5%
R611	038-16220-00	RES 0603 220K 1/16W +-5%	#R717A	038-10000-00	RES 0603 ZERO OHM 1/16W +-5%
R613	038-16100-00	RES 0603 100K 1/16W +-5%	R720	038-15560-00	RES 0603 56K 1/16W +-5%
R614	038-16220-00	RES 0603 220K 1/16W +-5%	#R720	038-10000-00	RES 0603 ZERO OHM 1/16W +-5%
R615	036-15270-00	RES M/F 0805 27K 5%	R721	038-14470-00	RES 0603 4K7 1/16W +-5%
R616	036-16150-00	RES M/F 0805 150K 5%	#R730	038-10000-00	RES 0603 ZERO OHM 1/16W +-5%
R617	036-16150-00	RES M/F 0805 150K 5%	#R731	038-10000-00	RES 0603 ZERO OHM 1/16W +-5%
R619	038-15270-00	RES 0603 27K 1/16W +-5%	#R732	038-10000-00	RES 0603 ZERO OHM 1/16W +-5%
R620	038-15100-00	RES 0603 10K 1/16W +-5%	R801	038-16100-00	RES 0603 100K 1/16W +-5%
R621	036-16390-00	RES M/F 0805 390K 5%	R802	038-16220-00	RES 0603 220K 1/16W +-5%
R622	038-15100-00	RES 0603 10K 1/16W +-5%	R803	036-16470-00	RES M/F 0805 470K 5%
R623	038-14680-00	RES 0603 6K8 1/16W +-5%	R804	038-15470-10	RES 0603 CHIP 47K 1/16W+-1%
R624	038-15100-00	RES 0603 10K 1/16W +-5%	R805	038-13680-00	RES 0603 680E 1/16W +-5%
R625	038-14680-00	RES 0603 6K8 1/16W +-5%	R806	038-16100-00	RES 0603 100K 1/16W +-5%
R626	038-15270-00	RES 0603 27K 1/16W +-5%	R807	038-15470-10	RES 0603 CHIP 47K 1/16W+-1%
R627	036-16390-00	RES M/F 0805 390K 5%	R808	038-14220-00	RES 0603 2K2 1/16W +-5%
R628	038-15100-00	RES 0603 10K 1/16W +-5%	R809	038-14470-00	RES 0603 4K7 1/16W +-5%
R629	038-15270-00	RES 0603 27K 1/16W +-5%	R810	038-13220-00	RES 0603 220E 1/16W +-5%
R630	038-17100-00	RES 0603 1M 1/16W +-5%	R811	038-12220-00	RES 0603 22E 1/16W +-5%
R631	038-14100-00	RES 0603 1K0 1/16W +-5%	R812	038-10000-00	RES 0603 ZERO OHM 1/16W +-5%
R632	036-16390-00	RES M/F 0805 390K 5%	R845	038-15560-00	RES 0603 56K 1/16W +-5%
R633	038-15100-00	RES 0603 10K 1/16W +-5%	R846	038-16220-00	RES 0603 220K 1/16W +-5%
R634	038-14680-00	RES 0603 6K8 1/16W +-5%	R847	038-12100-00	RES 0603 10E 1/16W +-5%
R635	038-16220-00	RES 0603 220K 1/16W +-5%	#R900	038-14470-00	RES 0603 4K7 1/16W +-5%
R636	038-16100-00	RES 0603 100K 1/16W +-5%	#R901	038-14470-00	RES 0603 4K7 1/16W +-5%
R637	038-16100-00	RES 0603 100K 1/16W +-5%	#R902	038-10000-00	RES 0603 ZERO OHM 1/16W +-5%
R638	038-15100-00	RES 0603 10K 1/16W +-5%	R903	038-10000-00	RES 0603 ZERO OHM 1/16W +-5%
R639	038-14220-00	RES 0603 2K2 1/16W +-5%	R525A	038-13330-00	RES 0603 330E 1/16W +-5%
R640	038-17100-00	RES 0603 1M 1/16W +-5%	R566A	038-16100-00	RES 0603 100K 1/16W +-5%
R641	036-16150-00	RES M/F 0805 150K 5%			
R642	038-16100-00	RES 0603 100K 1/16W +-5%	RV507	042-15500-01	RES PRESET SMD 50K +-25%
R643	036-16330-00	RES M/F 0805 330K 5%			
R644	038-17100-00	RES 0603 1M 1/16W +-5%	S1	240-10000-07	CONN SMD SKT 16W 2R M-MATCH
R645	038-16100-00	RES 0603 100K 1/16W +-5%	S2	240-10000-06	CONN SMD SKT 12W 2R M-MATCH
R646	036-16330-00	RES M/F 0805 330K 5%	SK501	240-04043-25	SKT 32 PIN SMD PLCC
R647	038-14220-00	RES 0603 2K2 1/16W +-5%			
R648	038-16220-00	RES 0603 220K 1/16W +-5%	TP610	005-10000-10	TEST PT SMD 0805 2.0X1.25X1.45
R649	038-17100-00	RES 0603 1M 1/16W +-5%	X501	274-01072-00	XTAL 8.064MHZ HC-49U/S C/W TEF
R650	038-14100-00	RES 0603 1K0 1/16W +-5%			
R651	038-15150-00	RES 0603 15K 1/16W +-5%			
R652	038-15100-00	RES 0603 10K 1/16W +-5%			
R653	038-13680-00	RES 0603 680E 1/16W +-5%			
#R656	038-10000-00	RES 0603 ZERO OHM 1/16W +-5%			
R658	038-16150-00	RES 0603 150K 1/16W +-5%			
R659	038-13680-00	RES 0603 680E 1/16W +-5%			
R660	038-15470-10	RES 0603 CHIP 47K 1/16W+-1%			
R662	038-14100-00	RES 0603 1K0 1/16W +-5%			
R663	038-15470-10	RES 0603 CHIP 47K 1/16W+-1%			
R664	038-15220-00	RES 0603 CHIP 22K 1/16W +-5%			
R665	038-16470-00	RES 0603 470K 1/16W +-5%			
R666	036-16150-00	RES M/F 0805 150K 5%			
R667	038-17100-00	RES 0603 1M 1/16W +-5%			
R668	038-16470-00	RES 0603 470K 1/16W +-5%			
R669	036-14180-00	RES M/F 0805 1K8 5%			
R670	038-15100-00	RES 0603 10K 1/16W +-5%			
R671	038-14470-00	RES 0603 4K7 1/16W +-5%			
R672	038-15100-00	RES 0603 10K 1/16W +-5%			
R673	038-15100-00	RES 0603 10K 1/16W +-5%			
R674	038-15100-00	RES 0603 10K 1/16W +-5%			
R675	038-15470-10	RES 0603 CHIP 47K 1/16W+-1%			
R676	038-15470-10	RES 0603 CHIP 47K 1/16W+-1%			
R677	038-15100-00	RES 0603 10K 1/16W +-5%			
R678	038-15680-00	RES 0603 CHIP 68K 1/16W +-5%			
R679	038-15470-10	RES 0603 CHIP 47K 1/16W+-1%			
R680	036-14270-00	RES M/F 0805 2K7 5%			
R681	038-15100-00	RES 0603 10K 1/16W +-5%			
R682	038-14180-00	RES 0603 CHIP 1K8 1/16W			
R683	038-15100-00	RES 0603 10K 1/16W +-5%			
R684	036-16120-00	RES M/F 0805 120K 5%			
R685	038-10000-00	RES 0603 ZERO OHM 1/16W +-5%			
R686	038-15470-10	RES 0603 CHIP 47K 1/16W+-1%			
R687	038-15100-00	RES 0603 10K 1/16W +-5%			
R688	038-15100-00	RES 0603 10K 1/16W +-5%			
R689	038-15100-00	RES 0603 10K 1/16W +-5%			
R690	038-15150-00	RES 0603 15K 1/16W +-5%			
R691	038-14220-00	RES 0603 2K2 1/16W +-5%			
R692	036-15220-00	RES M/F 0805 22K 5%			
R699	038-15470-10	RES 0603 CHIP 47K 1/16W+-1%			
R700	038-15470-10	RES 0603 CHIP 47K 1/16W+-1%			
R701	038-14470-00	RES 0603 4K7 1/16W +-5%			
R702	038-14220-00	RES 0603 2K2 1/16W +-5%			
R704	038-13330-00	RES 0603 330E 1/16W +-5%			
R705	038-14220-00	RES 0603 2K2 1/16W +-5%			
R706	038-14220-00	RES 0603 2K2 1/16W +-5%			

Mechanical Parts and Miscellaneous Parts

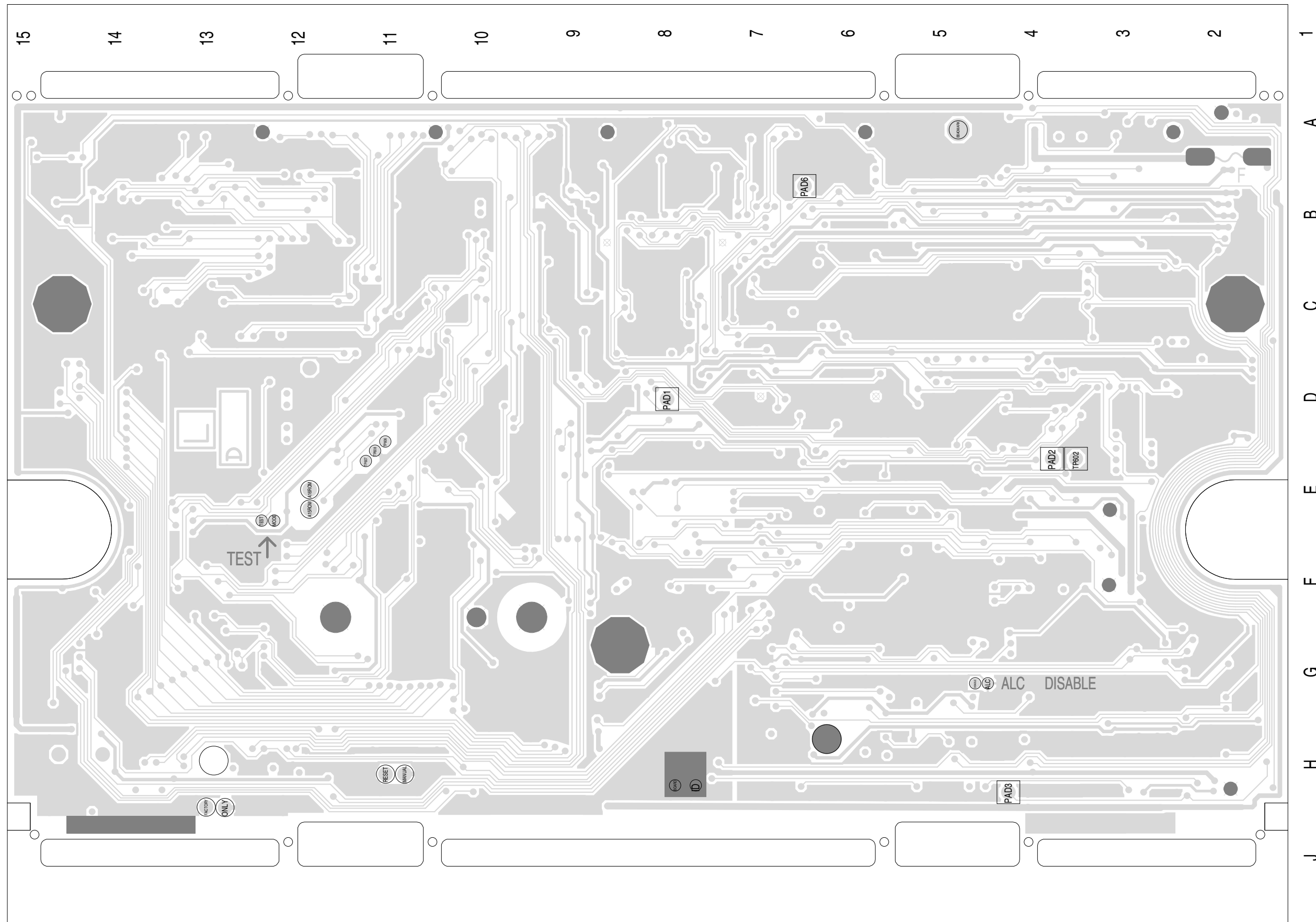
IPN	Description
200-00010-13	WIRE WINDING 0.3MM SELF FLUX
220-01344-06	PCB T2000 LOGIC HCII COMMON
345-00051-00	SCRW PTDG 30*06 P/TORX BZ LUBE
365-00100-21	LABEL WHITE S/A 28X11MM PIECES

Device	PCB	Circuit	Device	PCB	Circuit	Device	PCB	Circuit	Device	PCB	Circuit	Device	PCB	Circuit	Device	PCB	Circuit	Device	PCB	Circuit
C501	1:F7	2-C59	C653	1:F4	2-V6	#IC606	1:F10	1-J7	R530	1:J12	2-Q8	R636	1:F5	1-K4	R811	1:D4	1-S8			
C502	1:G8	2-L8	#C660	1:C3	1-I5	#IC606	1:F10	1-U9	R531	1:J12	2-R8	R637	1:B2	1-L2	R812	1:B2	2-L0			
C503	1:J13	2-T9	#C661	1:B3	1-J5	#IC606	1:F10	1-V9	R532	1:G13	2-R8	R638	1:B2	1-L3	R845	1:E3	1-F5			
C504	1:J11	2-Q8	#C662	1:D6	1-T6	#IC606	1:F10	1-V9	R533	1:G13	2-R8	R639	1:B2	2-B2	R846	1:C8	2-Q4			
C505	1:J13	2-R5	#C663	1:F10	1-T9	IC614	1:D2	1-H7	R534	1:G13	2-R8	R640	1:B2	1-L2	R847	1:B8	2-Q3			
C506	1:J13	2-Q5	#C664	1:D2	1-Q9	IC614	1:D2	1-J3	R535	1:J11	2-P8	R641	1:C5	1-N3	#R900	1:C3	1-H6			
C507	1:J13	2-Q5	#C665	1:H4	1-R9	IC614	1:D2	1-T7	R537	1:B4	2-L3	R642	1:B6	1-M4	#R901	1:C3	1-F6			
C508	1:J13	2-P5	#C666	1:G8	1-S9	IC614	1:D2	1-M3	R538	1:B4	2-L3	R643	1:C5	1-N2	#R902	1:E3	1-I6			
C509	1:F7	2-D5	#C667	1:D5	1-S9	#IC801	1:D4	1-L6	R539	1:J13	2-Q5	R644	1:C5	1-N3	R903	1:G6	1-W4			
C510	1:B2	2-L0	C700	1:G4	1-Q7	#IC801	1:D4	1-J6	R540	1:J13	2-Q5	R645	1:C4	1-O5	RESET	2:H10	2-S8			
C511	1:E9	2-U4	C701	1:F5	1-R7	#IC801	1:D4	1-F6	R541	1:J13	2-P5	R646	1:C5	1-O3	RV507	1:A13	2-D5			
C512	1:F7	2-D3	#C703	1:F5	1-Q7	#IC801	1:D4	1-S8	R543	1:E2	2-T9	R647	1:D5	1-O2	#RV508	1:C13	2-U1			
C514	1:H2	2-B9	#C704	1:F4	1-Q6	#IC801	1:D4	1-H7	R544	1:E2	2-U7	R648	1:B5	1-M5	#RV599	1:B13	2-T1			
C514A	1:H2	2-A9	C705	1:G4	1-R6	IC802	1:D5	1-O3	R545	1:F2	2-U8	R649	1:G6	1-V4	S1	1:H1	2-A1			
C514B	1:H2	2-B9	#C706	1:G3	1-S7	IC802	1:D5	1-S9	R547	1:C7	2-K3	R650	1:G5	1-W3	S1	1:H1	2-A3			
C516	1:B13	2-U2	C720	1:E11	2-G8	IC802	1:D5	1-K2	R548	1:C7	2-K0	R651	1:B1	2-C7	S1	1:H1	2-A3			
C517	1:G7	2-E6	C721	1:B11	2-F2				R549	1:C7	2-K3	R652	1:B1	2-W6	S1	1:H1	2-A3			
C519	1:J12	2-P8	C722	1:E13	2-B0	ID	2:J6	1-P1	R550	1:C7	2-K3	R653	1:F4	2-V6	S1	1:H1	2-A3			
C520	1:E9	2-P3	C801	1:C3	1-G6				R551	1:E10	2-O5	#R656	1:F4	2-U6	S1	1:H1	2-A3			
C522	1:G1	2-B4	C802	1:C3	1-G6	L501	1:E4	1-D8	#R552	1:G13	2-N6	R658	1:H6	1-U4	S1	1:H1	2-A4			
C523	1:F6	2-C4	C803	1:C4	1-G6				R553	1:F13	2-P8	R659	1:F3	2-U6	S1	1:H1	2-A4			
C524	1:C2	2-B6	C804	1:C4	1-H6	MANUAL	2:H10	2-S8	R554	1:D7	2-F4	R660	1:G6	1-V5	S1	1:H1	2-A1			
C525	1:H2	2-B3	C805	1:C3	1-G6	MODE	2:F11	2-O8	R556	1:J11	2-P8	R662	1:G6	1-W4	S1	1:H1	2-A2			
C526	1:H2	2-B3	C806	1:C4	1-K6	ONLY	2:J12	2-S7	R559	1:G2	2-W8	R663	1:C6	1-V5	S1	1:H1	2-A3			
C527	1:H2	2-E3	C808	1:C4	1-L7				R560	1:G2	2-W8	R664	1:H6	1-V4	S1	1:H1	2-A2			
C529	1:G7	1-V6	#C810	1:D8	2-S2	P1	1:G9	2-U0	R562	1:E9	2-T3	R665	1:H4	1-U3	S1	1:H1	2-A2			
C530	1:C1	1-V6	C811	1:G7	2-S2	PAD1	2:D7	2-F4	R563	1:E9	2-T2	R666	1:H3	1-W2	S1	1:H1	2-A2			
C532	1:G2	2-V8	#C812	1:D8	2-S2	PAD2	2:E3	2-V9	R564	1:E9	2-T2	R667	1:H3	1-U2	S1	1:H1	2-A2			
C533	1:E9	2-U2	C813	1:D8	2-S1	PAD3	2:J3	2-C2	R565	1:E9	2-T3	R668	1:H3	1-U3	S1	1:H1	2-A2			
C534	1:D9	2-S3	C814	1:D4	1-S8	PAD6	2:B5	2-O4	R566	1:E8	2-R3	R669	1:H3	1-U2	S2	1:B1	2-C0			
C535	1:E8	2-S1	C815	1:E4	1-C6				R566A	1:D8	2-R3	R670	1:H3	1-T3	#S8	1:F3	2-V5			
C536	1:E7	2-R1	#C831	1:E4	1-E6	Q501	1:J11	2-C7	R567	1:D8	2-S2	R671	1:H3	1-T2	#S8	1:F3	2-V6			
C537	1:B5	2-S0	C832	1:F8	2-C5	Q504	1:J13	2-Q5	R568	1:G8	2-S2	R672	1:H4	1-T3	#S8	1:F3	2-V4			
C538	1:B11	2-T1	#C906	1:C4	1-K6	Q505	1:C7	2-K3	R569	1:G8	2-S2	R673	1:H4	1-S3	#S8	1:F3	2-V4			
C540	1:E4	1-D7				Q506	1:F1	2-T8	R570	1:F11	2-M8	R674	1:G4	1-S3	#S8	1:F3	2-V4			
C541	1:E4	1-E7	D502	1:E1	2-U7	Q507	1:B9	2-Q4	#R571	1:F8	2-S1	R675	1:H4	1-S2	#S8	1:F3	2-V4			
C550	1:E13	2-O6	D502	1:E1	2-U7	Q508	1:C8	2-R4	R572	1:J11	2-C7	R676	1:G4	1-R3	#S8	1:F3	2-V4			
C560	1:E13	2-C0	D503	1:B6	2-M0	Q509	1:G6	2-D6	R573	1:F8	2-S1	R677	1:H6	1-R3	#S8	1:F3	2-V4			
C570	1:D10	2-J6	D503	1:B6	2-N1	Q510	1:B4	2-L3	R578	1:B8	2-Q3	R678	1:H5	1-Q2	#S8	1:F3	2-V6			
C571	1:D10	2-I6	D800	1:C5	1-K6	#Q511	1:H2	2-V9	#R579	1:E9	2-P1	R679	1:H5	1-Q3	#S8	1:F3	2-V5			
C600	1:G3	2-T7	D800	1:C5	1-K7	Q513	1:E9	2-T2	R580	1:B9	2-Q4	R680	1:H3	1-U3	#S8	1:F3	2-V5			
C601	1:J1	1-C8	DISABLE	2:G3	1-V2	Q514	1:F6	2-C4	R581	1:B8	2-R4	R681	1:H5	1-P2	#S8	1:F3	2-V5			
C602	1:D2	1-B2				Q515	1:E6	2-C4	R582	1:C8	2-R4	R682	1:H5	1-Q2	#S8	1:F3	2-V5			
C603	1:C2	1-C3	#F01	1:J7	1-R1	Q516	1:E6	2-D4	R583	1:C8	2-R4	R683	1:H5	1-Q2	#S8	1:F3	2-V5			
C605	1:C2	1-A2	#F02	1:J7	1-R1	Q517	1:D7	2-D4	R584	1:B6	2-S0	R684	1:C3	1-G6	#S8	1:F3	2-V5			
C607	1:E3	1-D6	#F03	1:J7	1-S1	Q601	1:F5	1-J4	R589	1:B13	2-U1	R685	1:H3	1-U2	#S8	1:F3	2-V5			
C608	1:E4	1-D6	FACTORY	2:J12	2-S7	Q602	1:B5	1-M4	R590	1:B2	2-U0	R686	1:C6	1-V5	#S9	1:F2	2-V7			
C609	1:D4	1-D6	FIDA	1:D9	1-H1	Q604	1:C6	1-W5	R591	1:C8	2-R3	R687	1:D3	1-A3	#S9	1:F2	2-V7			
C610	1:C2	1-D3	FIDB	1:B10	1-H1	Q605	1:H4	1-T3	R592	1:B8	2-S3	R688	1:D2	1-A2	#S9	1:F2	2-V6			
#C611	1:D3	1-E6				Q606	1:G6	1-W4	#R593	1:E8	2-Q1	R689	1:E4	1-C8	#S9	1:F2	2-V7			
C613	1:D1	1-E3	#IC500	1:C12	2-F1	Q607	1:G5	1-W3	R594	1:B13	2-U2	R690	1:D4	1-D8	#S9	1:F2	2-V7			
C614	1:C1	1-E3	IC502	1:D13	2-B0	Q608	1:C6	1-W5	#R595	1:H10	2-Q7	R691	1:H6	1-T4	#S9	1:F2	2-V7			
C615	1:E1	1-F3	IC502	1:D13	2-M6	Q700	1:G4	1-S6	#R596	1:B13	2-U1	R692	1:C2	1-C6	#S9	1:F2	2-V7			
C616	1:E1	1-F3	IC502	1:D13	2-R5	Q800	1:E4	1-C6	#R597	1:B13	2-U1	R699	1:G13	2-N5	#S9	1:F2	2-V7			
C617	1:E1	1-H3	IC502	1:D13	2-S5	Q802	1:E2	1-I6	R598	1:B13	2-T1	#R700	1:F5	1-Q7	#S13	1:A2	2-F0			
C618	1:E2	1-H3	IC502	1:D13	2-T5	Q804	1:E3	1-F5	R600	1:C4	1-L7	R700	1:G13	2-O5	#S14	1:A6	2-O0			
C619	1:E2	1-I3	#IC503	1:G13	2-N5				R602	1:E1	1-D2	R701	1:G4	1-Q7	#S14	1:A6	2-L0			
C620	1:E2	1-J3	IC504	1:H12	2-S9	R400	1:D6	2-D4	R603	1:C2	1-A3	R702	1:F4	1-R7	#S14	1:A6	2-O0			
C621	1:E2	1-J3	IC505	1:G12	2-Q5	R402	1:E6	2-D4	R604	1:C2	1-B3	R704	1:F4	1-R7	#S14	1:A6	2-O0			
C622	1:E2	1-H3	IC510	1:G3	2-V5	R403	1:D6	2-D4	R605	1:C2	1-B3	R705	1:F4	1-S7	#S14	1:A6	2-O0			
C623	1:B2	1-L3	IC510	1:G3	2-U3	R500	1:G3	2-T7	R606	1:E4	1-C6	R706	1:G4	1-Q7	#S14	1:A6	2-P0			
C624	1:C5	1-N5	IC511	1:E13	2-A0	R501	1:J11	2-B7	R607	1:E4	1-D6	R709	1:F4	1-Q6	#S14	1:A6	2-P0			
C625	1:C4	1-O5	IC511	1:E13	2-S5	R502	1:J11	2-C7	R608	1:C1	1-D3	R710	1:F4	1-Q6	#S14	1:A6	2-L0			
C626	1:C5	1-O4	IC513	1:H1	2-A8	R503	1:F6	2-C4	R609	1:E1	1-D2	R711	1:G4	1-R6	#S14	1:A6	2-M0			
C627	1:C5	1-N3	IC514	1:J2	2-A9	R504	1:F7	2-E0	R610	1:F1	2-A5	R712	1:G4	1-R7	#S14	1:A6	2-M0			
C628	1:C2	1-M2	#IC517	1:E8	2-Q1	R505	1:G7	2-E5	R611	1:C1	1-E3	#R713	1:D11	2-E7	#S14	1:A6	2-M0			
C629	1:C5	1-N2	IC555	1:C10	2-I2	R506	1:F7	2-E5	R613	1:E4	1-D6	#R714	1:E11	2-G6	#S14	1:A6	2-M0			
C630	1:H6	1-U4	IC601	1:D1	1-E3	R507	1:E11	2-F8	R614	1:E3	1-E6	#R715	1:D11	2-G6	#S14	1:A6	2-N0			
#C631	1:G3	1-V5	IC601	1:D1	1-Q9	R508	1:F7	2-D5	R615	1:C3	1-F6	R716	1:D11	2-E7	#S14	1:A6	2-N0			
#C632	1:G5	1-P4	IC601	1:D1	1-C2	R509	1:F7	2-B6	R616	1:C3	1-G6	#R717	1:E11	2-G6	#S14	1:A6	2-N0			
C635	1:G1	2-A8	IC601	1:D1	1-H2	R510	1:F7	2-C5	R617	1:C3	1-G6	#R717A	1:E11	2-F6	#S14	1:A6	2-N0			
C635A	1:F1	2-A8	IC601	1:D1	1-G2	R511	1:F7	2-D3	R619	1:E1	1-F2	R720	1:E3	1-F6	#S16	1:A8	2-C8			
C636	1:H6	1-V4	IC603	1:H4	1-V3	R512	1:E7	2-D3	R620	1:C1	1-E2	#R720	1:G5	1-P4	#S17	1:A10	2-C8			
C637	1:H4	1-V3	IC603	1:H4	1-V8	R514	1:E7	2-D2	R621	1:E1	1-F2	R721	1:D4	1-J7	#S18	1:A12	2-C8			
C63																				



TAIT ELECTRONICS IPN: 220-01344-06 ISS: A ID: 1.TA DATE: 18 Jul 2000
 T2K ENHANCED PCB LAYOUT - TOP SIDE

Scale: 2.3:1 ; Rotation: 270 degrees



TAIT ELECTRONICS	IPN:	ISS:	ID:	DATE:
	220-01344-06	A	2.BA	18 Jul 2000
T2K ENHANCED PCB LAYOUT - BOTTOM SIDE				

Scale:2.3:1 ; Rotation: 90 degrees

